



DRAGON Grand Prix Germany

Grade 1 sailing event of the International Dragon-Class

5th – 8th July 2017

Kühlungsborn, Germany

www.dragon-kuehlungsborn.de

SAILING INSTRUCTIONS

1. ORGANIZING AUTHORITY

The Segelclub Kühlungsborn e.V. and the German Dragon Association organize this Grade 1 event in conjunction with the International Dragon Association (IDA).

2. RULES

- 2.1. The regatta will be governed by the rules as defined in the Racing Rules of Sailing (RRS).
- 2.2. The legal sunset time for the duration of the event is 21:48 hrs.
- 2.3. The English text of these sailing instructions shall prevail.
- 2.4. National prescriptions will not apply.
- 2.5. In the event of a conflict between the notice of race and the sailing instructions, the sailing instructions shall prevail (this changes rule 63.7).



3. NOTICES TO COMPETITORS

Notices to competitors will be posted on the official notice board located near the Race Office.

4. CHANGES TO SAILING INSTRUCTIONS

Any change to the sailing instructions will be posted on the official notice board at least two hours before the start on the day it will take effect except that any change to the schedule of races will be posted by the end of the protest time limit of the day before it will take effect.

5. SIGNALS MADE ASHORE

- 5.1. Signals made ashore will be displayed on the mast located close to the check-in area.
- 5.2. Flags "AP over H" displayed with two sound signals mean: races not started are postponed. Competitors shall stay ashore. This changes rule "Race Signals".
- 5.3. Flag "AP" displayed alone with two sound signals means: races not started are postponed. The Warning signal will not be made less than 30 minutes after lowering AP flag. This changes RRS "Race Signals".
- 5.4. Flag "Y"  means: rule 40 applies at all times while afloat. This changes preamble of Part 4.
- 5.5. Flag "L"  with a sound signal means 'a notice to competitors has been posted'.

6. SCHEDULE

- 6.1. Eight races are scheduled.
- 6.2. It is intended to sail two races per day. However, an extra race may be sailed on any day, in exceptional circumstances, providing racing becomes no more than one race ahead of schedule.
- 6.3. Races are scheduled according to the program as follows:

Wednesday 05.07.	12:00	First Warning Signal For Race 1
Thursday 06.07.	11:00	First Warning Signal
Friday 07.07.	11:00	First Warning Signal
Saturday 07.07.	11:00	First Warning Signal

- 6.4. All boats must be afloat/launched by 04.07.at 18:00 hrs.

7. CLASSFLAG

Letter "D" on a White flag (Class insignia).

8. RACING AREAS

Attachment A shows the location of racing areas.

9. THE COURSE

- 9.1. The courses will be windward-leeward. The diagram in Attachment B shows the courses, including the order in which marks are to be passed, and the side on which each mark is to be left.
- 9.2. The first leg will be approximately 2 nautical miles long.
- 9.3. No later than the warning signal, the principal race committee boat will display the approximate compass bearing and the distance to mark 1.
- 9.4. The race will not be shortened before the end of the leg to Mark 1 for the second time. This changes Rule 32.

10. MARKS

- 10.1. Marks 1, 2s and 2p will be orange tetrahedrons. Mark 1a will be a red cylinder
- 10.2. The change of course mark will be yellow cylinders.
- 10.3. The starting marks will be as per SI 12.1.
- 10.4. The finishing marks will be as per SI 14.
- 10.5. A race committee boat signaling a change of a leg of the course is a mark as provided in instruction 12.3.

11. REPORTING AT COMMITTEE BOAT

Before starting in the first race of the day, boats shall, while sailing on starboard tack, pass behind the principal race committee boat in a distance of not more than 50 meters. Boats failing to report may be scored "DNS".

12. THE START

- 12.1. The starting line will be between a staff on the race committee boat displaying an orange flag on the starboard end of the starting line and a staff displaying an orange flag on the race.
- 12.2. A boat starting later than 4 minutes after its starting signal will be scored DNS.
- 12.3. To alert boats that a race will soon start, an orange flag will be displayed with a sound signal at least 10 minutes before the starting signal.
- 12.4. All the committee boats may keep their position by using their engine. This will not be ground for redress. This changes rule 62.1(a).

13. CHANGE OF THE NEXT LEG OF THE COURSE

- 13.1. To change the next leg of the course the race committee will lay a new mark (or move the finishing line) and remove the original mark as soon as practicable. When in a subsequent change a new mark is replaced, it will be replaced by an original mark.
- 13.2. If a change of course is made to marks 2s/2p these may be substituted by a single mark which shall be left to port.

14. THE FINISH

The finishing line will be between a staff on the Race Committee boat displaying a blue flag and a blue cylinder.

15. PENALTY SYSTEM

- 15.1. Rule 44.1 is changed so that the two turns penalty is replaced by the one turn penalty.
- 15.2. A breach of rules other than 28 and 31 and those in Part 2 shall, after a hearing be given a penalty ranging from 10% of the number of boats registered, to disqualification.
- 15.3. If a member of the protest committee, whilst afloat on the course, witnesses an infringement, he may signal with a whistle while displaying a RED flag. Such penalty shall be a one turn penalty. If no penalty turn is taken by an infringing boat, the Protest committee will again signal with a whistle while aiming a RED flag at the boat. The penalty shall then be a two turn penalty. Action or non-action by the Protest committee shall not be grounds for redress.
- 15.4. Appendix P will apply. Rule P2.3 will not apply and rule P2.2 is changed so that it will apply to any penalty after the first one.

16. TIME LIMITS

- 16.1. Target time: approx.120 minutes.
- 16.2. The overall time limit is three hours.
- 16.3. Boats failing to finish within 30 minutes after the first boat finishes will be scored "DNF" without a hearing. This changes Rules 35, A4 and A5.

17. PROTESTS

- 17.1. Protests forms are available at the race office. Protests and requests for redress shall be delivered there before the end of the protest time limit.
- 17.2. The protest time limit is 60 minutes after the last boat has finished the last race of the day. This time will be posted on the official notice board. The same protest time applies to all protests by the race committee and protest committee, and requests for redress.
- 17.3. Notices will be posted within 20 minutes of the protest time limit to inform competitors of hearings in which they are parties or named as witnesses. Hearings will be held in the Protest Committee Room, located in VIELMEER Restaurant, first floor, beginning as soon as possible.
- 17.4. On the last day of the regatta a request for reopening a hearing or for redress shall be delivered:
- a – within the protest time limit if the party requesting reopening was informed of the decision on the previous day.
 - b – no later than 30 minutes after the party requesting reopening or redress was informed of the decision on that day. This changes rule 62.2 and 66.
- 17.5. Breaches of instructions 6.4, 11, 19, 20, 21 and 23 will not be grounds for a protest by a boat. This changes rule 60.1(a). Penalties for these breaches or breaches of Class Rules may be less than disqualification if the protest committee so decides.
- 17.6. Protests of the racing committee or the protest committee will be posted on the official notice board within the protest time limit to inform competitors according to rule 61.1(b).

18. SCORING

- 18.1. There will be one discard when five races or more have been completed
- 18.2. The number of completed races required to validate the event is 3.

19. SAFETY REGULATIONS

A boat that retires from a race shall notify the race committee as soon as possible.

20. REPLACEMENT OF CREW OR EQUIPMENT

Substitution of equipment or crew will not be allowed without prior written approval of the race Committee. These requests shall be made in writing.

21. EQUIPMENT AND MEASUREMENT CHECKS

- 21.1. A boat or equipment may be inspected at any time for compliance with the class rules and sailing instructions.
- 21.2. On the water, a boat can be instructed by a race committee measurer to proceed immediately to a designated area for inspection.

22. RACE COMMITTEE BOATS AT MARKS

RC boats may be in position near each mark. When in position, a RC boat will display an inflatable shape in the mast. Failure of a RC boat to be in position or to display its signal will not be ground for redress. This changes rule 62.1(a).

23. SUPPORT BOATS

- 23.1. Team leaders, coaches and other support personnel may use “support craft” to assist their competitors on the water. They shall register at the regatta office prior to the first scheduled race, providing details of their boats and distinctive identification, which shall include flying a WHITE flag showing the national 3 letter code in BLACK (minimum height 120mm), of the country of origin.
- 23.2. Coach/support boats shall not tow competitors out to the race course (unless requested to by the Race Committee) and may only tow boats in after the last competitor has finished.
- 23.3. Subject to SI 23.4, team leaders, coaches and other support boats shall stay more than 150 metres to leeward of the starting line and from the leeward marks and from any racing Dragon from the time of the preparatory signal until the starting signal.
- 23.4. At all times, support boats shall comply with the directions given by the Race Committee. In particular this includes assisting with rescues when requested to do so.
- 23.5. Coach/support boats shall not contact their connected boats between races.
- 23.6. Support boats must be on call on VHF Channel 8 at all times.

24. HAUL-OUT RESTRICTIONS

All yachts shall be afloat before 18:00 hrs. on July 4th and shall not be hauled out during the regatta except with, and according to, the terms of prior written permission of the Protest committee or as defined in rule 32.2.

25. DIVING EQUIPMENT AND PLASTIC TOOLS

Underwater breathing apparatus and plastic pools or their equivalent shall not be used around keel boats between the preparatory signal of the first race and the end of the regatta.

26. VHF RADIO

Except in an emergency, a boat shall neither make nor receive radio transmissions whilst racing except those available to all boats. This restriction also applies to mobile telephones and smart phones. The Race Committee may use VHF radio to communicate to the Fleet, including the starting area, countdown to the start, OCS bow/sail numbers (to be communicated at least 2 minutes after the start), general recalls, black flag DSQs and Postponements, information on wind and current at mark one. Failure to make these broadcasts or failure to hear them shall not constitute grounds for redress. This changes rule 62.1(a). VHF 72 will be used to communicate with competitors.

27. OFFICIAL BOATS

Official boats will be marked

- Race Committee Boats will be identified through display of a white flag with *RC*
- Protest committee boats will display a flag marked "JURY".
- Measurer boat: Black flag with yellow *Measurer*
- Press Boats: White flag with *Press*

28. DISCLAIMER OF LIABILITY

Competitors participate in the regatta entirely at their own risk. See rule 4, Decision to Race. The organizing authority will not accept any liability for material damage or personal inprotest committee or death sustained in conjunction with or prior to, during, or after the regatta.

29. INSURANCE

29.1. Each participating boat shall be insured with valid third-party liability insurance with a minimum cover of 1.500.000 € (one million five hundred thousand Euros) per event or the equivalent.

29.2. Competitors are advised to have their own personal accident insurance.

30. RACE OFFICIALS

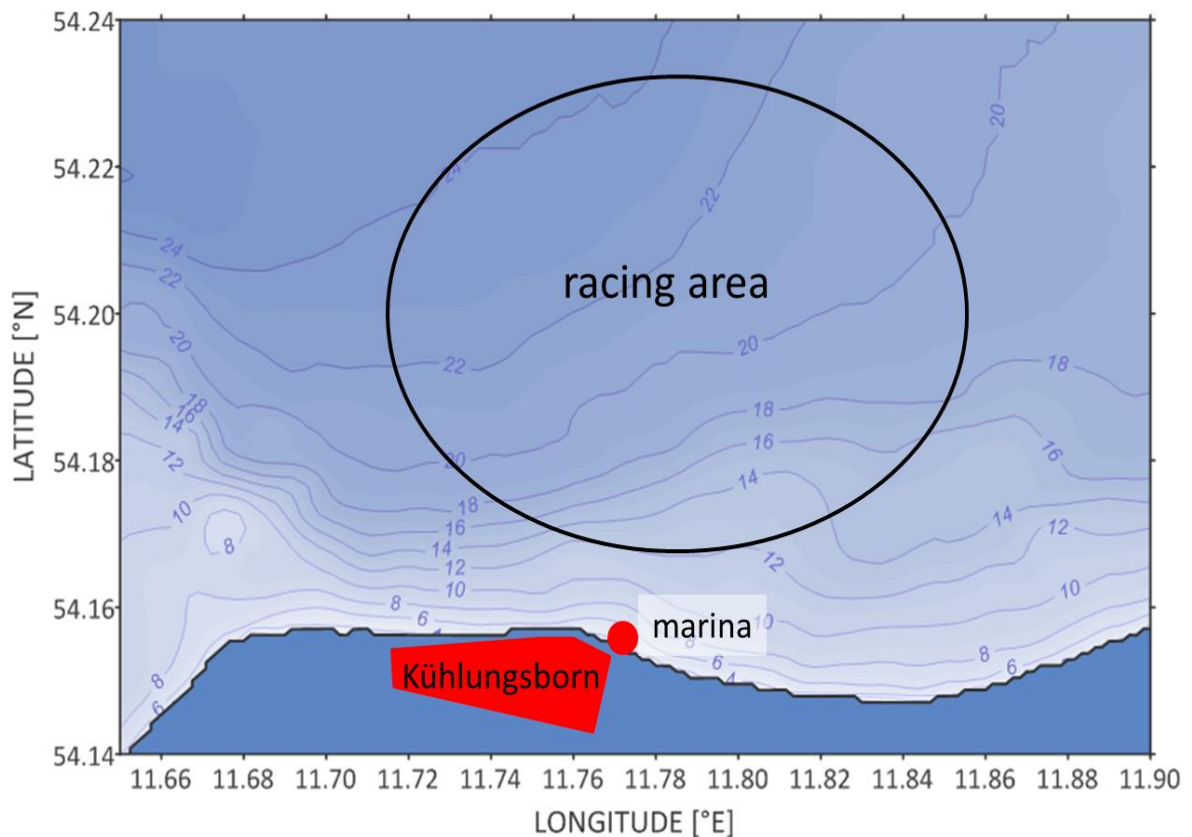
Principal Race Officer:	Philip Müller
Chair of the Protest Committee:	Ilca Reintrog
Sailing Co-ordinator:	Martin Payne

31. ADVERTISING

In accordance with Regulation 20.4.1 boats shall display sponsor advertising stickers supplied by the organizing authority.

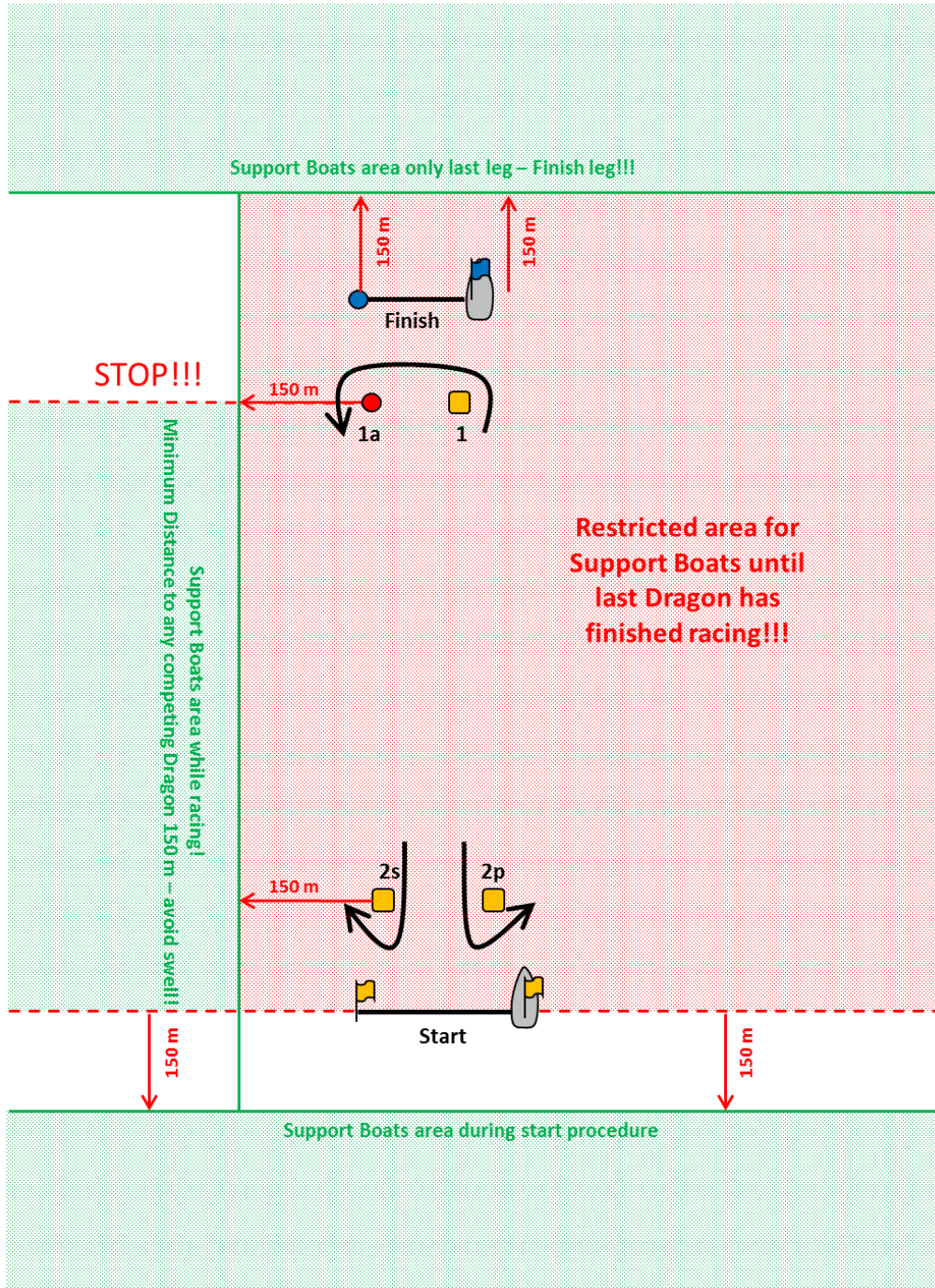
32. ATTACHEMENT A

RACING AREA



33. ATTACHEMENT B

COURSE: Start – 1 – 1a – 2s/2p – 1 – 1a – 2s/2p - Finish



Note: This drawing is schematic. The distances and mark positions are not to scale